

DATA TODAY! ACTION TOMORROW!

Youth Survey Data Can Help Meet the Needs of Michigan Youth

Childhood experiences, both positive and negative, have an impact on a person's future health and opportunities. Youth data can help guide prevention strategies and activities to promote safe, stable, and nurturing environments for children and communities.

The Michigan Profile for Healthy Youth (MiPHY), Youth Risk Behavior Survey (YRBS), and Youth Tobacco Survey (YTS) are surveys taken by Michigan youth that provide important data about teens' direct experiences and better understanding of needs.



Data as a Tool

Not only does data allow us to track trends in health outcomes and improvements over time, but data can also help support decision making processes.

Data can be used to:

- **Hear directly from youth about their experiences**
- Guide after school activities and supports
- Determine priorities in programs and services

Survey Engagement - How Does It work?

- YRBS is usually **conducted** in the spring of odd years.
- MiPHY is conducted during even years with the next survey cycle taking place from September 2025-June 2026 and is **open to all schools** at any time during the survey cycle for youth in grades 7, 9, & 11.
- YRBS & YTS schools are **randomly selected** for participation to ensure a representative sample of Michigan high school students.
- Surveys are administered at school during one class period and takes approximately 30-40 minutes to complete.
- MiPHY results are analyzed quickly, so districts can access their results 1-3 days after the survey closes. County level results are available online.



Michigan Profile for Healthy Youth (MiPHY) Youth Risk Behavior Survey (YRBS) Youth Tobacco Survey (YTS)



What Schools Say:

"We have a responsibility to our community and to meet the needs of our youth."

"Provides a positive opportunity for youth to tell us about themselves."

"Results reflect the attitudes and behaviors of our youth, in our schools and communities."

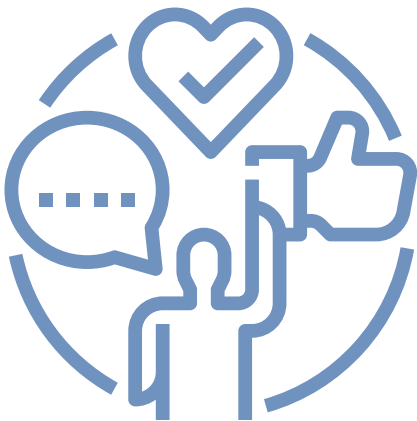
MI ACE Data Dashboard

- Youth data related to ACEs, risk and protective factors.
- State and county-level results are included, accessible to school districts and community organizations to help leverage funding or develop programs to reduce ACEs throughout Michigan.



Scan the QR code or go to:
<https://www.miacedata.org/>

Call to Action



- Contact your School Board and/or Superintendent and encourage participation in the YRBS and YTS if they are selected.
- All districts are eligible to participate in MiPHY. If your district does not participate, urge them to become involved.
- Share ideas about how your district can use the data collected to support your youth.

Direct questions about the YRBS or MiPHY to
kramern@michigan.gov
and YTS to shamof@michigan.gov